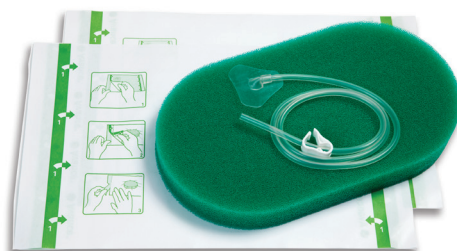


# Avance<sup>®</sup> Foam Dressing Kits



True NPWT<sup>®</sup>

 **Avance<sup>®</sup>**  
FOAM DRESSING KITS



**Avance® Foam Dressing Kits**  
**Providing a flexible solution for Negative Pressure Wound Therapy**

Avance Foam is a hydrophobic reticulated polyurethane foam with a large open cell structure intended for use with Negative Pressure Wound Therapy (NPWT) systems. The foam distributes pressure across the wound surface and allows the passage of fluid and exudate through the negative pressure system.

The hydrophobic and large open cell structure ensures even distribution of negative pressure to the wound bed and thereby promotes exudate and body fluid removal.

**The Avance Foam Dressing Kit is indicated for use for the following wound types:**

- Traumatic wounds
- Surgical (i.e. sternal/abdominal/extremity) wounds
- Dehisced wounds
- Chronic wounds including pressure ulcers, diabetic foot ulcers and venous leg ulcers
- Partial-thickness burns
- Flaps and grafts

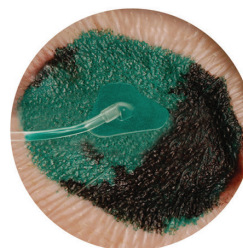
Property	Avance Foam
Thickness (mm)	30
Density (kg/m <sup>3</sup> )	30
Cell count (cells/cm)	7
Tensile strength dry (PSI)	24
Tensile strength wet (PSI)	18



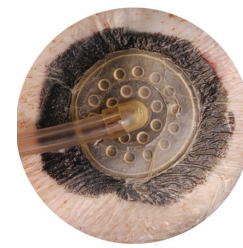
**Proven easier to monitor wound status<sup>1</sup>**

In a recent study comparing Avance Foam, Black Foam and gauze, Avance Foam was proven better at contrasting against blood and exudates than Black Foam – making it easier to monitor one aspect of the healing process. Avance Foam and Black Foam have similar effects in the wound bed, including wound contraction, micro-deformation of the wound bed and granulation tissue formation.

<sup>1</sup> Malmström et al. Green foam, black foam or gauze for NPWT: effects on granulation tissue formation. J Wound Care, 29:4-9 (2011).



**Avance Foam**



**Black Foam**

Small Dressing Kit	Medium Dressing Kit	Large Dressing Kit
- 1 Avance Foam (8 x 10 x 3 cm)	- 1 Avance Foam (12 x 20 x 3 cm)	- 1 Avance Foam (15 x 26 x 3 cm)
- 1 Avance Transparent Film (20 x 27 cm)	- 2 Avance Transparent Films (20 x 27 cm)	- 2 Avance Transparent Films (20 x 27 cm)
- 1 Avance Transfer Pad (ESI)	- 1 Avance Transfer Pad (ESI)	- 1 Avance Transfer Pad (ESI)

Medical Vacuum Technology  
 for Healthcare Professionals

**Please contact us or your local Medela representative for details.**

CAUTION: Federal US law restricts this device to sale by or on the order of a physician. Avance Dressing Kits distributed by Medela, Inc.

Medela is a registered trademark of Medela Holding AG. Avance is a registered trademark of Mölnlycke Health Care AB.

 Mölnlycke Health Care AB  
 Gamlestadsvägen 3C,  
 Box 13080  
 SE-402 52 Göteborg, Sweden

Medela, Inc.  
 1101 Corporate Drive  
 McHenry, IL 60050  
 USA  
 Phone +1 877 735 1626  
 Fax +1 815 307 8942  
 suction@medela.com  
 www.medelasuction.com

**Local contact:**